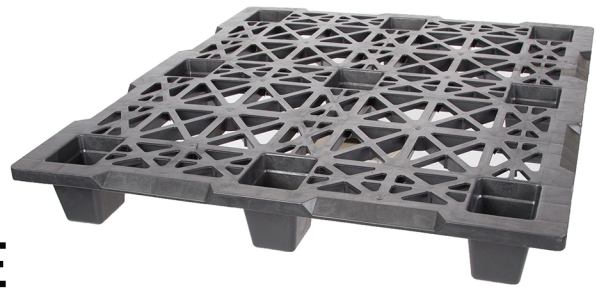




**N
E
S
T
A
B
L
E**



48X40 EXPORT NESTABLE

SPECIFICATIONS	IN / LB	MM / KG
LENGTH (L)	48	1,220
WIDTH (W)	40	1,016
HEIGHT (H)	5.5	140
WEIGHT	17	7.7
STATIC LOAD CAPACITY	5,000	2,268
DYNAMIC LOAD CAPACITY	2,000	907
RACKING CAPACITY	N/A	N/A
53' TRAILER QTY	2,100	
40' SEA CONTAINER	1,280	



NESTABLE 3-RUNNER

SPECIFICATIONS	IN / LB	MM / KG
LENGTH (L)	48	1,220
WIDTH (W)	40	1,016
HEIGHT (H)	6.25	159
WEIGHT	24	11
STATIC LOAD CAPACITY	5,000	2,268
DYNAMIC LOAD CAPACITY	1,500	681
RACKING CAPACITY	N/A	N/A
53' TRAILER QTY	510	
40' SEA CONTAINER	N/A	

MARILYN CARTER
 GM & INSIDE SALES
 563-332-0052
 MMC@GSTMFG.COM